

THE PRESS-ENTERPRISE

LOCAL



C9 Overhaul transit funding

A year after a bridge collapsed in Minneapolis, our transportation system — and policies — remain broken, says the city's mayor and the Brookings Institution.

SECTION



FRIDAY
AUGUST 1, 2008

5

INDEX

Datebook C2
Community C2
Region C3
Our Views C8b
Your Views C8b
Doonesbury C8b
Mallard Fillmore... C8b
Leonard Pitts C9
Opinion C9

COLUMNIST
DAN BERNSTEIN IS
TAKING SOME TIME OFF



INSIDE

Art exhibit

C2 An exhibit of artist Paul Price's latest work will go on display later this month at the Gallery at the Merc in Old Town Temecula.

SPOTLIGHT: EXHIBIT FEATURES ARTIST PAUL PRICE

'NEW SURREALISM'

BY HOPE PIERSON
THE PRESS-ENTERPRISE

Paul Price has lived in the world of art and anthropology more than 40 years.

The Arts Council of Temecula Valley plans to present an exhibit of Price's art work at the Gallery at the Merc, 42051 Main St. in Old Town Temecula from Aug. 15 through Oct. 5.

An opening reception is set for 5:30 to 7 p.m. Aug. 15.

Price, 66, said the exhibit of about 25 never-before-shown paintings explores his "new surrealism period," which combines beauty and femininity.

Born in Tennessee, Price moved with his family to California at the age of 2 after his father was drafted into World War II.

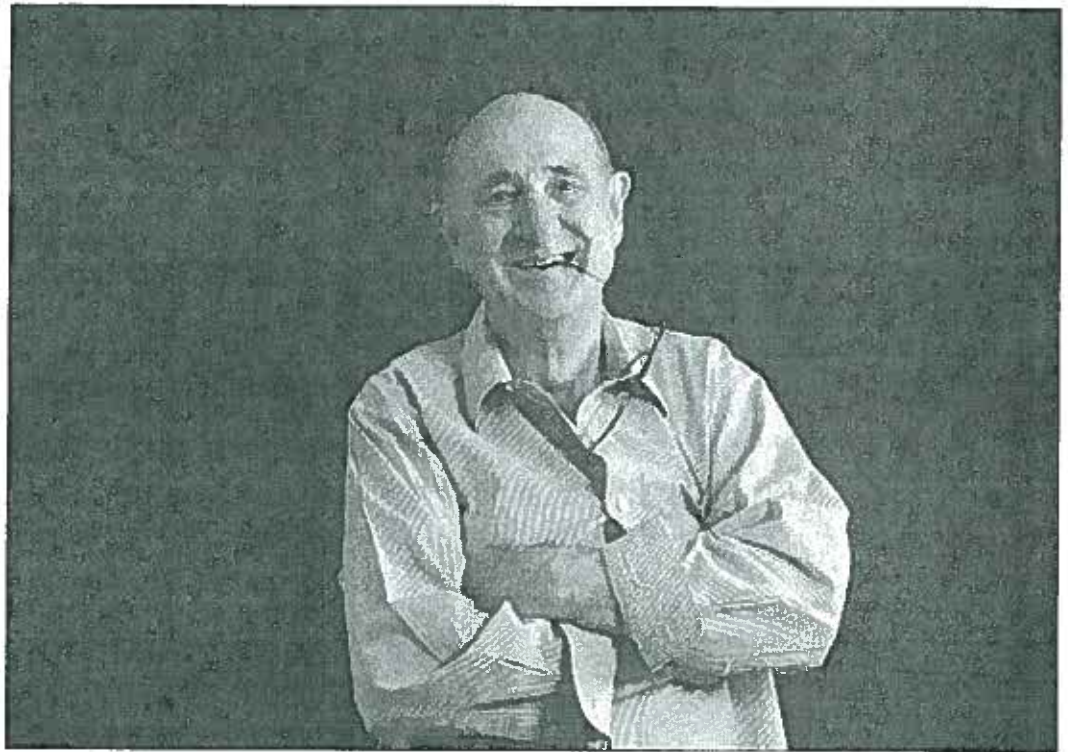
He grew up on a ranch in Gavilan Hills. There he cultivated his love of the outdoors and started collecting butterflies and rocks.

"I loved the dirt, the dust and the outdoors has always been my form of worship," Price said.

He started drawing in the third grade, then painted murals on butcher paper. He received his first painting set at age 8.

"My first teacher when I was 11 was Ralph Love," Price said. Love was a former Temecula artist whose has several paintings on display locally.

Price's dream was to become



SPECIAL TO THE PRESS-ENTERPRISE

Paul Price says his exhibit in Old Town Temecula beginning Aug. 15 explores his "new surrealism period," which combines beauty and femininity.

a background artist with Walt Disney and did concept drawings for Disneyland Enterprises in 1975.

He attended the Chouiard Art Institute in Los Angeles for two years.

He then worked for Dunn Edwards, the Marriott Corporation and had his own design studio business.

He is freelancing by sculpt-

ing, painting murals, lecturing and doing museum consulting.

He has worked on projects for the Santa Cruz Beach and Boardwalk, helped develop the original Chuck E. Cheese characters, produced fabric lines, designed the Pechanga Cultural Center, established the farm museum at the Winchester Mystery House in San Jose and consulted on the displays at the

Lake Perris State Park Museum.

Price has a collection of artwork at the Pechanga Resort & Casino, including sculptures, mazes, rock art reproductions, engravings and 50 paintings.

Price lives in Canyon Lake with his artist-wife Kathi.

Information: 951-695-2787.

Reach Hope Pierson at 951-375-3732 or hpierson@PE.com